

MPC

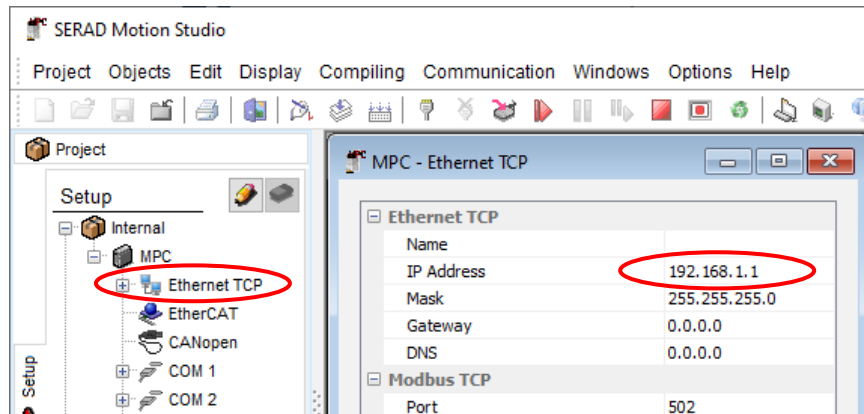
Loading a project

1. Requirements:

A computer with an IP address compatible with that of the MPC.



To know the IP address of the MPC.



For a new MPC, the default address is: 192.168.1.1

2. Material needed:

A computer with an RJ45 port.

A network cable

The Motion Studio software for the OS version you want.

2. Project loading



- Connect the MPC (Port X3) to the Ethernet network.
- Connect the PC to the Ethernet network.
- Launch the Motion Studio software from the start menu.

- Open the project
- Go to menu **Communication\ Send setup**
- Go to menu **Communication\ Send variables**
- Go to menu **Communication\ Send tasks**
- If an EtherCAT initialization error message appears, click on Yes. (The error message appears because no drive is connected to the MPC)

